



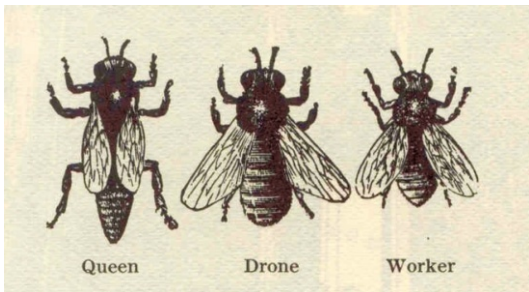
Central Texas  
Beekeepers Association

# 10<sup>th</sup> Annual Beekeeping School

Saturday, March 17, 2018

Washington County Fairgrounds

1305 East Blue Bell Road, Brenham, Texas



Whether you are a complete beginner or an experienced beekeeper, there will be something of interest to you!

A preliminary course schedule is given on the back of this flier.

## Cost, including Lunch and Snacks:

Individual	\$65
Additional Adult	\$60
Student (Including College)	\$25
Children Under 12	\$10

**Registration Will Begin on November 1, 2017**

**Register at: [www.tinyurl.com/2018BeeSchool](http://www.tinyurl.com/2018BeeSchool)**

Please visit us at [www.centraltexasbeekeepers.org](http://www.centraltexasbeekeepers.org)  
email [centraltexasbeekeepers@gmail.com](mailto:centraltexasbeekeepers@gmail.com) or call 979-277-0411  
for more information or to be added to our mailing list.

Visit us on Facebook at [CentralTexasBeekeepersAssociationandFriends](https://www.facebook.com/CentralTexasBeekeepersAssociationandFriends)

**CTBA 2018 Beekeepers School: Preliminary Course Offering—As of October 15, 2017**

Courses subject to change based on Speaker Availability

<b>Course</b>	<b>Description</b>
<b>General Classes</b>	
Beekeeping 101	Multi-Hour Class for Beginners covering Basic Beekeeping Principles
Beekeeping 201	Multi-Hour Class for Intermediate Beekeepers seeking Advanced Techniques
Top Bar Beehives	Multi-Hour Class Addressing the Top Bar Hive and it's Utilization
Live Bee Inspection	Live Bee Inspection--Protective Gear Provided
<b>Beginner Classes</b>	
Getting, Installing, Handling Bees	Where to get Bees, How to Install them in Your Hive, and the General Handling of Bees
What Equipment Do I Buy	What you will need for your Beekeeping Activities
Different Hive Options	Langstroth, Top Bar, Flow Hive and other Hive Options discussed
Introduction to the Flow Hive	For those interested in the Flow Hive, a hands on look at this design
How to Assemble Equipment	Actual Demonstration of Assembly of Hive Components (Langstroth)
Lighting and Using a Smoker	Hands on Demonstration of Smoker Utilization
Inspecting Your Hive	How to Inspect Your Hive and What to Look for
Nutrition and Feeding	Basic Care and Feeding of Your Bees
Chemical Free Beekeeping	Keeping Your Hive Free of Chemicals
Products of the Hive	What Your Bees Can Produce For You
How to Extract Honey	Basics of Harvesting Honey from Your Hive
Ag Valuation for Bees	Review of the Regulations Regarding Property Tax
Planting for Pollinators	Identifying Plants Beneficial to Your Bees
Beescapes	Landscaping for Bees
<b>Intermediate Classes</b>	
Making Splits	How to Multiply Your Hives by way of Splitting
Making Mead	Introduction to the Making of Mead from Your Honey Crop
Packaging and Marketing Your Honey	How to Market Your Honey and the Texas Laws that You Need to Know About
Pest and Disease Control	Protecting Your Bees from the Pests and Diseases that Might Afflict Them
Maximizing Honey Production	Proven Techniques for Increasing Your Honey output.
Re-Queening Your Hive	Why, When and How to Re-Queen Your Hive
Growing Your Bee Business	Moving from Hobbyist to Serious Sideline
<b>Advanced Classes</b>	
Raising Your Own Queens	Avoid the Cost and Problems of Purchasing Queens by Raising Your Own
Application of Oxalic Acid	How to properly and safely apply Oxalic Acid for Varroa Mite Control
Sustainable Pest and Disease Management	Review of Current State of Pest and Disease Management
Integrated Pest Management (IPM)	Discussion of IPM Methodology and Application
Removing Bees from Structures	Techniques for Safe and Efficient Bee Removal and Recovery
Bee Reproductive Biology	Examination of the Sex Lives of Bees!
Designing a Honey House	How to Plan your Honey Facility for Efficiency and Productivity
Commercial Beekeeping Considerations	A Commercial Beekeeper's Point of View
Advanced Beekeeper's Forum	Panel Discussion for Advanced Beekeepers on Current Beekeeping Topics